

(5-Methoxy-1*H*-indol-3-yl)acetonitrile

Yu-Hua Ge,* Jin-Feng Li and Yang-Hui Luo

Ordered Matter Science Research Center, College of Chemistry and Chemical Engineering, Southeast University, Nanjing 210096, People's Republic of China
Correspondence e-mail: peluoyh@sina.com

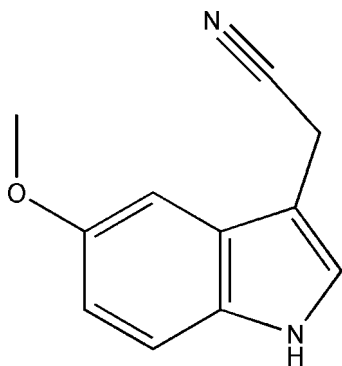
Received 5 November 2011; accepted 1 December 2011

Key indicators: single-crystal X-ray study; $T = 293$ K; mean $\sigma(\text{C}-\text{C}) = 0.003$ Å; R factor = 0.064; wR factor = 0.162; data-to-parameter ratio = 17.0.

In the title compound, $\text{C}_{11}\text{H}_{10}\text{N}_2\text{O}$, the O atom and the C atom of the methylene group deviate only slightly [0.029 (3) and 0.055 (3) Å, respectively] from the approximately planar ring system (r.m.s. deviation = 0.013 Å). In the crystal, $\text{N}-\text{H}\cdots\text{O}$ hydrogen bonds link the molecules into zigzag chains running along the b axis.

Related literature

Indole-3-acetic acid is recognized as the key auxin in most plants, see: Woodward & Bartel (2005).



Experimental

Crystal data

$\text{C}_{11}\text{H}_{10}\text{N}_2\text{O}$	$V = 945.7$ (3) Å ³
$M_r = 186.21$	$Z = 4$
Monoclinic, $P2_1/n$	Mo $K\alpha$ radiation
$a = 8.9242$ (18) Å	$\mu = 0.09$ mm ⁻¹
$b = 11.461$ (2) Å	$T = 293$ K
$c = 9.889$ (2) Å	$0.20 \times 0.20 \times 0.20$ mm
$\beta = 110.77$ (3)°	

Data collection

Rigaku SCXmini diffractometer	9617 measured reflections
Absorption correction: multi-scan (<i>CrystalClear</i> ; Rigaku, 2005)	2164 independent reflections
$T_{\min} = 0.983$, $T_{\max} = 0.983$	1225 reflections with $I > 2\sigma(I)$
	$R_{\text{int}} = 0.085$

Refinement

$R[F^2 > 2\sigma(F^2)] = 0.064$	127 parameters
$wR(F^2) = 0.162$	H-atom parameters constrained
$S = 1.01$	$\Delta\rho_{\text{max}} = 0.16$ e Å ⁻³
2164 reflections	$\Delta\rho_{\text{min}} = -0.23$ e Å ⁻³

Table 1

Hydrogen-bond geometry (Å, °).

$D-\text{H}\cdots A$	$D-\text{H}$	$\text{H}\cdots A$	$D\cdots A$	$D-\text{H}\cdots A$
$\text{N1}-\text{H1A}\cdots\text{O1}^i$	0.86	2.18	3.038 (3)	175

 Symmetry code: (i) $-x + \frac{1}{2}, y + \frac{1}{2}, -z + \frac{3}{2}$.

Data collection: *CrystalClear* (Rigaku, 2005); cell refinement: *CrystalClear*; data reduction: *CrystalClear*; program(s) used to solve structure: *SHELXS97* (Sheldrick, 2008); program(s) used to refine structure: *SHELXL97* (Sheldrick, 2008); molecular graphics: *DIAMOND* (Brandenburg & Putz, 2005); software used to prepare material for publication: *SHELXL97*.

Supplementary data and figures for this paper are available from the IUCr electronic archives (Reference: BT5708).

References

- Brandenburg, K. & Putz, H. (2005). *DIAMOND*. Crystal Impact GbR, Bonn, Germany.
Rigaku. (2005). *CrystalClear*. Rigaku Corporation, Tokyo, Japan.
Sheldrick, G. M. (2008). *Acta Cryst.* **A64**, 112–122.
Woodward, A. W. & Bartel, B. (2005). *Ann. Bot.* **95**, 707–735.

supplementary materials

Acta Cryst. (2012). E68, o66 [doi:10.1107/S1600536811051762]

(5-Methoxy-1*H*-indol-3-yl)acetonitrile

Y.-H. Ge, J.-F. Li and Y.-H. Luo

Comment

The derivatives of indole are important chemical materials, because they are excellent drug intermediates for many pharmaceutical products. As part of our interest in these materials, we report here the crystal structure of the title compound.

The molecular structure of the title compound is shown in Fig. 1. The atoms O1 and N3 are located in the indole plane. The title compound formed zigzag chain structure *via* intermolecular N—H \cdots O hydrogen bonds interactions (Fig. 2).

Experimental

Crystals of 3-cyano-5-methoxyindole suitable for X-ray diffraction were obtained by slow evaporation of a methanol solution.

Refinement

All H atoms attached to C atoms and N atoms were fixed geometrically and treated as riding with C—H = 0.93 Å (CH), C—H = 0.97 Å (CH₂), C—H = 0.96 Å (CH₃) and N—H = 0.86 Å with $U_{\text{iso}}(\text{H}) = 1.2U_{\text{eq}}(\text{CH}, \text{CH}_2 \text{ and NH})$ and $U_{\text{iso}}(\text{H}) = 1.5U_{\text{eq}}(\text{CH}_3)$.

Figures

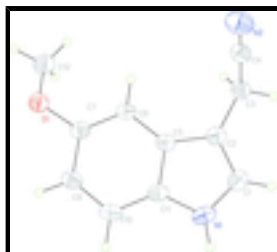


Fig. 1. The molecular structure of the title compound with the atom-labelling scheme. Displacement ellipsoids are drawn at the 30% probability level. H atoms are represented as small spheres of arbitrary radii.

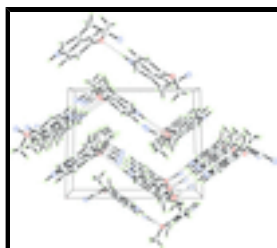


Fig. 2. A packing view down the *a* axis showing the three dimensional network. Intermolecular hydrogen bonds are shown as dashed lines.

(5-Methoxy-1*H*-indol-3-yl)acetonitrile

Crystal data

$C_{11}H_{10}N_2O$	$F(000) = 392$
$M_r = 186.21$	$D_x = 1.308 \text{ Mg m}^{-3}$
Monoclinic, $P2_1/n$	Mo $K\alpha$ radiation, $\lambda = 0.71073 \text{ \AA}$
Hall symbol: -P 2yn	Cell parameters from 2164 reflections
$a = 8.9242 (18) \text{ \AA}$	$\theta = 3.0\text{--}27.5^\circ$
$b = 11.461 (2) \text{ \AA}$	$\mu = 0.09 \text{ mm}^{-1}$
$c = 9.889 (2) \text{ \AA}$	$T = 293 \text{ K}$
$\beta = 110.77 (3)^\circ$	Prism, white
$V = 945.7 (3) \text{ \AA}^3$	$0.20 \times 0.20 \times 0.20 \text{ mm}$
$Z = 4$	

Data collection

Rigaku SCXmini diffractometer	2164 independent reflections
Radiation source: fine-focus sealed tube graphite	1225 reflections with $I > 2\sigma(I)$
Detector resolution: $13.6612 \text{ pixels mm}^{-1}$	$R_{\text{int}} = 0.085$
CCD_Profile_fitting scans	$\theta_{\text{max}} = 27.5^\circ$, $\theta_{\text{min}} = 3.0^\circ$
Absorption correction: multi-scan (<i>CrystalClear</i> ; Rigaku, 2005)	$h = -11 \rightarrow 11$
$T_{\text{min}} = 0.983$, $T_{\text{max}} = 0.983$	$k = -14 \rightarrow 14$
9617 measured reflections	$l = -12 \rightarrow 12$

Refinement

Refinement on F^2	Primary atom site location: structure-invariant direct methods
Least-squares matrix: full	Secondary atom site location: difference Fourier map
$R[F^2 > 2\sigma(F^2)] = 0.064$	Hydrogen site location: inferred from neighbouring sites
$wR(F^2) = 0.162$	H-atom parameters constrained
$S = 1.01$	$w = 1/[\sigma^2(F_o^2) + (0.0742P)^2]$
2164 reflections	where $P = (F_o^2 + 2F_c^2)/3$
127 parameters	$(\Delta/\sigma)_{\text{max}} < 0.001$
0 restraints	$\Delta\rho_{\text{max}} = 0.16 \text{ e \AA}^{-3}$
	$\Delta\rho_{\text{min}} = -0.23 \text{ e \AA}^{-3}$

Special details

Geometry. All e.s.d.'s (except the e.s.d. in the dihedral angle between two l.s. planes) are estimated using the full covariance matrix. The cell e.s.d.'s are taken into account individually in the estimation of e.s.d.'s in distances, angles and torsion angles; correlations

between e.s.d.'s in cell parameters are only used when they are defined by crystal symmetry. An approximate (isotropic) treatment of cell e.s.d.'s is used for estimating e.s.d.'s involving l.s. planes.

Refinement. Refinement of F^2 against ALL reflections. The weighted R -factor wR and goodness of fit S are based on F^2 , conventional R -factors R are based on F , with F set to zero for negative F^2 . The threshold expression of $F^2 > \sigma(F^2)$ is used only for calculating R -factors(gt) *etc.* and is not relevant to the choice of reflections for refinement. R -factors based on F^2 are statistically about twice as large as those based on F , and R -factors based on ALL data will be even larger.

Fractional atomic coordinates and isotropic or equivalent isotropic displacement parameters (\AA^2)

	x	y	z	$U_{\text{iso}}^*/U_{\text{eq}}$
O1	0.08200 (19)	0.23891 (13)	0.92113 (17)	0.0519 (5)
N1	0.4881 (3)	0.52233 (16)	0.7682 (2)	0.0518 (6)
H1A	0.4745	0.5834	0.7146	0.062*
C11	0.3678 (3)	0.45969 (19)	0.7916 (2)	0.0427 (6)
C7	0.1867 (3)	0.30957 (19)	0.8827 (2)	0.0411 (6)
C6	0.3486 (3)	0.29199 (18)	0.9310 (2)	0.0397 (6)
H6A	0.3953	0.2306	0.9932	0.048*
C5	0.4415 (3)	0.36821 (17)	0.8848 (2)	0.0375 (5)
C9	0.1145 (3)	0.40038 (19)	0.7890 (2)	0.0471 (6)
H9A	0.0039	0.4097	0.7578	0.056*
C2	0.6091 (3)	0.37808 (19)	0.9158 (2)	0.0435 (6)
C10	0.2039 (3)	0.4759 (2)	0.7425 (2)	0.0493 (7)
H10A	0.1559	0.5366	0.6795	0.059*
C4	0.7188 (3)	0.1836 (2)	0.9369 (3)	0.0512 (7)
N2	0.7006 (3)	0.0969 (2)	0.8796 (3)	0.0763 (8)
C3	0.7349 (3)	0.2968 (2)	1.0056 (3)	0.0499 (7)
H3A	0.8399	0.3288	1.0192	0.060*
H3B	0.7258	0.2884	1.1000	0.060*
C1	0.6310 (3)	0.4726 (2)	0.8428 (2)	0.0488 (6)
H1B	0.7297	0.4993	0.8438	0.059*
C12	0.1430 (3)	0.1826 (2)	1.0567 (3)	0.0674 (8)
H12A	0.0603	0.1361	1.0707	0.101*
H12B	0.1792	0.2401	1.1319	0.101*
H12C	0.2312	0.1334	1.0596	0.101*

Atomic displacement parameters (\AA^2)

	U^{11}	U^{22}	U^{33}	U^{12}	U^{13}	U^{23}
O1	0.0497 (10)	0.0531 (11)	0.0501 (10)	-0.0009 (8)	0.0141 (9)	0.0083 (8)
N1	0.0763 (15)	0.0387 (11)	0.0433 (11)	-0.0030 (11)	0.0248 (11)	0.0039 (9)
C11	0.0580 (15)	0.0334 (13)	0.0369 (12)	0.0000 (11)	0.0171 (12)	-0.0018 (10)
C7	0.0483 (14)	0.0359 (13)	0.0375 (12)	-0.0007 (10)	0.0132 (11)	-0.0029 (10)
C6	0.0510 (15)	0.0296 (12)	0.0354 (12)	0.0022 (10)	0.0116 (11)	0.0016 (9)
C5	0.0482 (14)	0.0336 (12)	0.0297 (11)	0.0016 (10)	0.0127 (10)	-0.0052 (9)
C9	0.0496 (15)	0.0413 (14)	0.0422 (13)	0.0042 (11)	0.0063 (12)	-0.0013 (11)
C2	0.0533 (15)	0.0397 (14)	0.0387 (13)	0.0006 (11)	0.0181 (12)	-0.0064 (10)
C10	0.0649 (17)	0.0367 (14)	0.0393 (13)	0.0084 (12)	0.0098 (13)	0.0051 (10)

supplementary materials

C4	0.0540 (16)	0.0443 (16)	0.0596 (16)	0.0075 (12)	0.0253 (13)	0.0017 (13)
N2	0.0910 (19)	0.0520 (16)	0.0877 (18)	0.0086 (13)	0.0337 (15)	-0.0115 (14)
C3	0.0490 (14)	0.0445 (15)	0.0569 (15)	0.0016 (11)	0.0197 (12)	-0.0065 (12)
C1	0.0589 (16)	0.0443 (15)	0.0497 (14)	-0.0050 (12)	0.0274 (13)	-0.0078 (11)
C12	0.0650 (18)	0.0741 (19)	0.0598 (17)	-0.0023 (15)	0.0180 (14)	0.0212 (15)

Geometric parameters (\AA , $^\circ$)

O1—C7	1.387 (3)	C9—H9A	0.9300
O1—C12	1.411 (3)	C2—C1	1.353 (3)
N1—C1	1.352 (3)	C2—C3	1.487 (3)
N1—C11	1.378 (3)	C10—H10A	0.9300
N1—H1A	0.8600	C4—N2	1.127 (3)
C11—C5	1.397 (3)	C4—C3	1.448 (3)
C11—C10	1.381 (3)	C3—H3A	0.9700
C7—C6	1.366 (3)	C3—H3B	0.9700
C7—C9	1.391 (3)	C1—H1B	0.9300
C6—C5	1.389 (3)	C12—H12A	0.9600
C6—H6A	0.9300	C12—H12B	0.9600
C5—C2	1.420 (3)	C12—H12C	0.9600
C9—C10	1.363 (3)		
C7—O1—C12	117.14 (18)	C5—C2—C3	126.4 (2)
C1—N1—C11	109.2 (2)	C9—C10—C11	118.0 (2)
C1—N1—H1A	125.4	C9—C10—H10A	121.0
C11—N1—H1A	125.4	C11—C10—H10A	121.0
N1—C11—C5	106.8 (2)	N2—C4—C3	177.3 (3)
N1—C11—C10	131.5 (2)	C4—C3—C2	110.65 (19)
C5—C11—C10	121.7 (2)	C4—C3—H3A	109.5
C6—C7—O1	123.33 (19)	C2—C3—H3A	109.5
C6—C7—C9	121.7 (2)	C4—C3—H3B	109.5
O1—C7—C9	114.9 (2)	C2—C3—H3B	109.5
C7—C6—C5	118.2 (2)	H3A—C3—H3B	108.1
C7—C6—H6A	120.9	C2—C1—N1	110.0 (2)
C5—C6—H6A	120.9	C2—C1—H1B	125.0
C6—C5—C11	119.5 (2)	N1—C1—H1B	125.0
C6—C5—C2	133.2 (2)	O1—C12—H12A	109.5
C11—C5—C2	107.2 (2)	O1—C12—H12B	109.5
C10—C9—C7	120.8 (2)	H12A—C12—H12B	109.5
C10—C9—H9A	119.6	O1—C12—H12C	109.5
C7—C9—H9A	119.6	H12A—C12—H12C	109.5
C1—C2—C5	106.8 (2)	H12B—C12—H12C	109.5
C1—C2—C3	126.8 (2)		

Hydrogen-bond geometry (\AA , $^\circ$)

$D-H\cdots A$	$D-H$	$H\cdots A$	$D\cdots A$	$D-H\cdots A$
N1—H1A \cdots O1 ⁱ	0.86	2.18	3.038 (3)	175.

Symmetry codes: (i) $-x+1/2, y+1/2, -z+3/2$.

Fig. 1

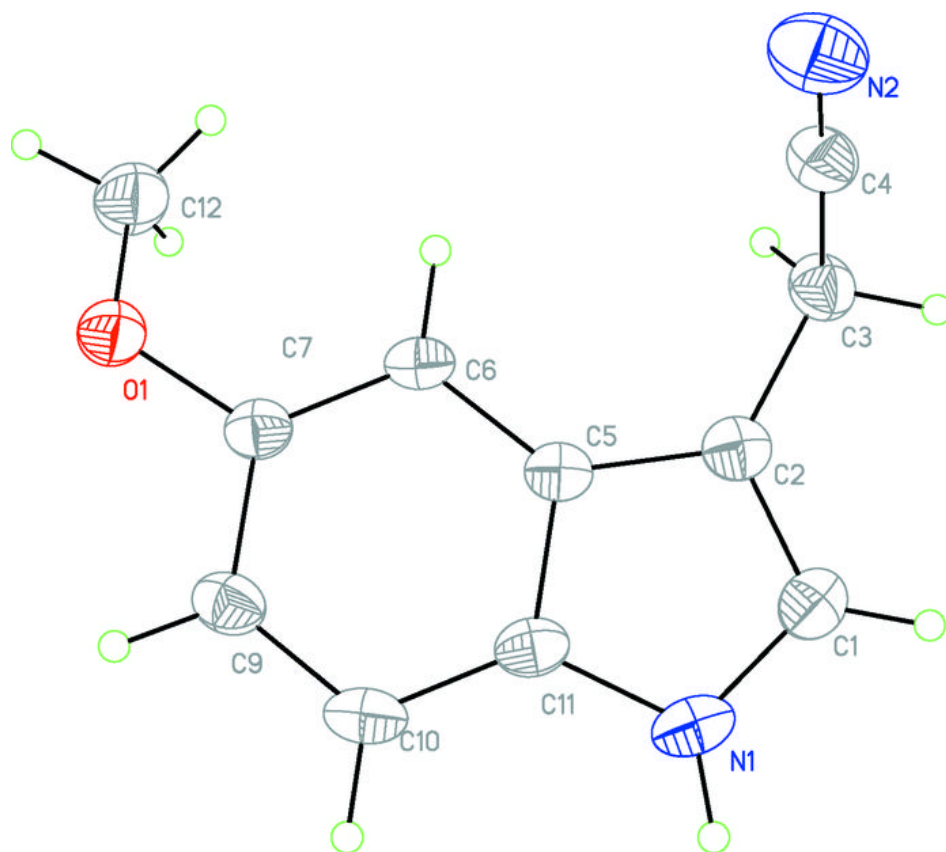


Fig. 2

